

Research article

Manipulation of the follicular phase: Uterodomes and pregnancy - is there a correlation?

Susan M Adams, Nalini Gayer, Vera Terry and Christopher R Murphy

Address: Departments of Anatomy & Histology, and Obstetrics and Gynaecology, University of Sydney, Sydney, NSW 2006, Australia\

E-mail: Susan M Adams - susan@anatomy.usyd.edu.au; Nalini Gayer - peteri@westmed.wh.usyd.edu.au; Vera Terry - VeraT@chw.edu.au; Christopher Murphy - histology@anatomy.usyd.edu.au

Published: 17 July 2001

Received: 27 February 2001

BMC Pregnancy and Childbirth 2001, 1:2

Accepted: 17 July 2001

This article is available from: <http://www.biomedcentral.com/1471-2393/1/2>

© 2001 Adams et al; licensee BioMed Central Ltd. Verbatim copying and redistribution of this article are permitted in any medium for any non-commercial purpose, provided this notice is preserved along with the article's original URL. For commercial use, contact info@biomedcentral.com

Abstract

Background: Manipulation of the follicular phase uterine epithelium in women undergoing infertility treatment, has not generally shown differing morphological effects on uterine epithelial characteristics using Scanning Electron Microscopy (SEM) and resultant pregnancy rates have remained suboptimal utilising these manipulations. The present study observed manipulation of the proliferative epithelium, with either 7 or 14 days of sequential oestrogen (E) therapy followed by progesterone (P) and assessed the appearance of pinopods (now called uterodomes) for their usefulness as potential implantation markers in seven women who subsequently became pregnant. Three endometrial biopsies per patient were taken during consecutive cycles: day 19 of a natural cycle - (group 1), days 11/12 of a second cycle after 7 days E then P - (group 2), and days 19/22 of a third cycle after 14 days E then P - (group 3). Embryo transfer (ET) was performed in a subsequent long treatment cycle (as per Group 3).

Results: Seven pregnancies resulted in seven viable births including one twins and one miscarriage. Analysis of the individual regimes showed 5 days of P treatment to have a higher correlation for uterodomes in all 3 cycles observed individually. It was also observed that all 7 women demonstrated the appearance of uterodomes in at least one of their cycles.

Conclusions: We conclude that manipulation of the follicular phase by shortening the period of E exposure to 7 days, does not compromise uterine epithelial morphology and we add weight to the conclusion that uterodomes indicate a receptive endometrium for implantation.

Introduction

Uterodomes are apical cellular protrusions which occur during the "nidation window" and have been used as uterine markers in conjunction with biopsy and scanning electron microscopy to determine the timing of implantation [1,2,3,4,5,6,7,8]. In some animals true pinocytotic structures have been demonstrated but in other animals including humans, the function of these structures, which somewhat resemble pinopods, is unknown. Hence

[9] has suggested that these structures be referred to as uterodomes. Regardless of the function of uterodomes they are, however, a useful indicator of uterine receptivity in many studies including humans.

The correlation between uterodome appearance and the nidation window first proposed by Psychoyos [10; 11], is now generally accepted. However there are still some mammals including humans where the presence and

therefore function of uterodomes is not understood. This current work is part of ongoing worldwide interest in the cellular plasma membrane transformation to define the reason for the appearance of these structures [9; 12].

Typically in IVF programs for frozen-thawed embryo transfer (ET) in women with normally functioning ovaries or in women receiving oocyte donation, the endometrium is prepared with exogenous hormones in a manner imitating that of the natural cycle in preparation for ET. Although several protocols for uterine preparation employing incremental doses of E2 and P have been suggested [13,14,15,16,17,18] observation of normal morphological changes using light and electron microscopy has demonstrated that exact hormonal mimicking of the natural cycle is not necessary. This has meant that sequential 'same dose' E2 and P regimes (as compared to incremental dose) can be implemented without the need for variation of dose throughout the cycle [19,20,21,22,23,24,25,26].

More recently, manipulation of the follicular phase of the natural cycle to shorten or extend the length of the cycle beyond its physiological limits has been investigated. In the naturally occurring cycle, short or prolonged follicular phases are uncommon—only 7% are <11 days and 5% are >20 days [27]. The implication of this observation is that 'timed' donor oocyte programs can be initiated with synchronous priming of endometrial receptivity in the recipient.

Investigators testing the hypothesis that morphological endometrial integrity reflected functionality ie: implantation and pregnancy, concluded that there was no difference between implantation and pregnancy rates [21; 25; 28]. Moreover, it was shown that the proliferative endometrium is tolerant of some degree of manipulation of the duration of the follicular phase from as short as 5 to as long as 100 days prior to the administration of P [15, 19, 22, 26, 29,30,31]. Other studies suggested that the receptivity of the endometrium, as assessed by pregnancy rates, was best preserved when the follicular phase was kept between 12 and 19 days [23, 25, 32]. Short follicular phases (<11 days) were however, correlated with early pregnancy loss [21, 33, 34].

In the present work, as part of an ongoing clinical study of women in an IVF programme, 7 women were chosen for endometrial analysis because of their resultant successful pregnancies. These women had previously failed to conceive, either after ovarian hyperstimulation or frozen cycle embryo transfer. Part of this study included manipulation and comparison of the secretory uterine epithelium, by using short (7 days) and longer (14 days) sequential doses of exogenous E2 followed by P adminis-

tration with the morphology of their normal cycle. Endometrial morphology with the aid of SEM was then assessed to determine whether the presence, abundance and developmental stage of uterodomes were useful markers to determine optimal timing of appropriate endometrial maturation which would facilitate successful implantation and pregnancy.

Materials and methods

The women in the study group were recruited in a single centre, were aged between 28 and 44 years (mean age 32.9 years) and had cryopreserved embryos from previous in vitro fertilization attempts. Of these 7 women who subsequently became pregnant 4 were diagnosed with tubal factor and one each with endometriosis, idiopathic infertility and male factor. All women gave informed consent and the study was assessor-blind. Each patient received oral 50 mcg ethinyloestradiol/day ('Estigyn', Duncan Flockhart) starting on cycle day 1 and continued throughout the cycle. Progesterone (USP) 300 mg/day, as vaginal pessaries, was commenced on day 8 of the 'short follicular phase' study and on day 15 of the 'longer follicular phase' study. Blood serum levels were not followed because it is accepted that there is little or no correlation between endometrial morphology and blood hormone levels [35,36,37].

Ovulation was calculated from LMP in the natural cycle since the women were cycling regularly on a 28 day cycle. Therefore it was not deemed necessary to determine ovulation by LH surge. In the artificial cycles, the ovarian activity was not suppressed by GnRH. Although some women who are on programmed cycles may spontaneously ovulate, the exogenous hormones override any effects presumed from the endogenous hormones [26, 38].

Three consecutive cycles were observed in each of these patients:

Regime 1: Natural Cycle - no exogenous E2 and P. Biopsies were taken on day 19, (on a 28 day natural cycle, the secretory epithelium would be equivalent to that of 5 days of progesterone preparation).

Regime 2: Short Follicular Phase. Starting at the LMP date, continuous E2 was administered. On D8, P was commenced and E2 was continued as before. Biopsies were taken on D 11 or D 12, (equivalent to 4 or 5 days of progesterone preparation).

Regime 3: Longer Follicular Phase. As for regime 2 but P commenced on D 15 of the cycle. Biopsies were taken on D 19 or D 22, (equivalent to 5 or 8 days of progesterone preparation). One patient however received her biopsy on day 21.

Tissue Collection

Uterine epithelial biopsies were taken from the anterior fundus, using a Novak curette while the patient was under sedation. The tissue was immediately rinsed in phosphate buffer (PO4) 0.1 M pH 7.4 and placed in 2.5% Glutaraldehyde in 0.1 M PO4 for fixation, rinsed in 0.1 M PO4 pH 7.4 and placed in fresh 0.1 M PO4 pH 7.4.

Scanning Electron Microscopy

For scanning electron microscopy the fixed tissue was cut into 3 mm pieces and post fixed in 2% Osmium Tetroxide (OsO4) in 0.1 M PO4 pH 7.4 and rinsed in 0.1 M PO4 pH 7.4. Tissue was incubated in freshly prepared 1% thiosemicarbazide, rinsed in distilled water and re-incubated in 1% OsO4 (aqueous). After further washing in distilled water the tissue was dehydrated through graded ethanols to 100%, prepared for critical point drying, mounted onto aluminium stubs, sputter coated to 20 nm with platinum and viewed using a Philips Scanning Electron Microscope (SEM) 505 operating at 20 keV.

SEM was used to observe and date the endometrial morphology. The presence of uterodomes was graded as: (absent, few, moderate or abundant); and their development as: (developing, fully developed or regressing) [7, 8, 39, 40].

Results

The resultant 7 pregnancies consisted of 7 live births (one twins) and one miscarriage. The secretory uterine epithelial morphology of these seven women was observed for uterodomes and correlated to the length of P exposure both individually and as groups per treatment regime.

Analysis of the individual regimes showed 5 days of P treatment to have a higher correlation for uterodomes in all 3 cycles observed individually. It was also observed that all 7 women demonstrated the appearance of uterodomes in at least one of their cycles.

Three patients biopsied on D5 of presumed P exposure in their natural cycle did not display uterodomes and their epithelium was found to be either (1) suboptimal or (2) retarded (Figure 1a). The suboptimal epithelium displayed variable morphology of flattened, pleiomorphic cells without cell borders, variable microvilli coverage and structure, few cilia groups and erosion or cellular porosity. The retarded epithelium - one biopsy dated as 'early proliferative', displayed ciliogenesis, pronounced cell borders, large polyhedral cells, dense flat microvilli and/or secretion droplets. Both hormonal regimes, either 7 or 14 days of E before P commencement, improved the appearance and amount of epithelia when compared to the natural cycle with uterodomes being observed at D5P (Figure 1b). Where uterodomes were observed 'fully developed' at D5 on short E2 they were found to be 'developing' at D7 on long E2, suggesting their possible maturation at D8 (Figure 1c).

Table 1 sets out the individual patient biopsy results for each cycle. It can be seen that patients 2 and 6 benefited from both hormone regimes when compared to their natural cycles, as did patient 5. Patient 4 showed no difference between her natural cycle and treated cycles at D5 and the D4 appearance of developing uterodomes postulates that they would be fully developed by D5. However uterodome abundance for both regimes increased to 'moderate' compared to 'few' in the natural cycle. Where uterodomes were 'fully developed' in the natural cycle D5 (Figure 2a) they were not observed on D8 in patient 1 and were 'developing' in patient 7, and when observed in conjunction with other epithelial characteristics, such as clumping of swollen microvillous tips on protruding cells, demonstrated a retarded epithelium suggestive of pinopod development on D9/10, that is long E2 resulted in a shift in the nidation window (Figure 2b). Patient 3 also demonstrated a retarded epithelium on D8 where uterodomes were not observed.

Where epithelium was well presented in the natural cycle, neither of the exogenous regimes had further beneficial effect. The two hormonal regimes did not show

Table 1: Stages of uterodome development (0=absent, 1=developing, 2=developed, 3=regressing) and uterodome abundance (+ = few, ++ = moderate, +++ = abundant, N/A = no epithelium) in consecutive cycles in 7 patients who subsequently became pregnant.

Patient	Biopsy 1 (Day 5)	Biopsy 2 (Day 5)	Biopsy 3 (Day 5)
1	2 +++	N/A	0(D8)
2	0	0	1 +
3	N/A	1 (D4) +	0 (D8)
4	2 +	1 (D4) ++	2 +
5	0	2 +++	1 (D7) +++
6	0	1 +	1 +++
7	2 +	2 +++	1 +++

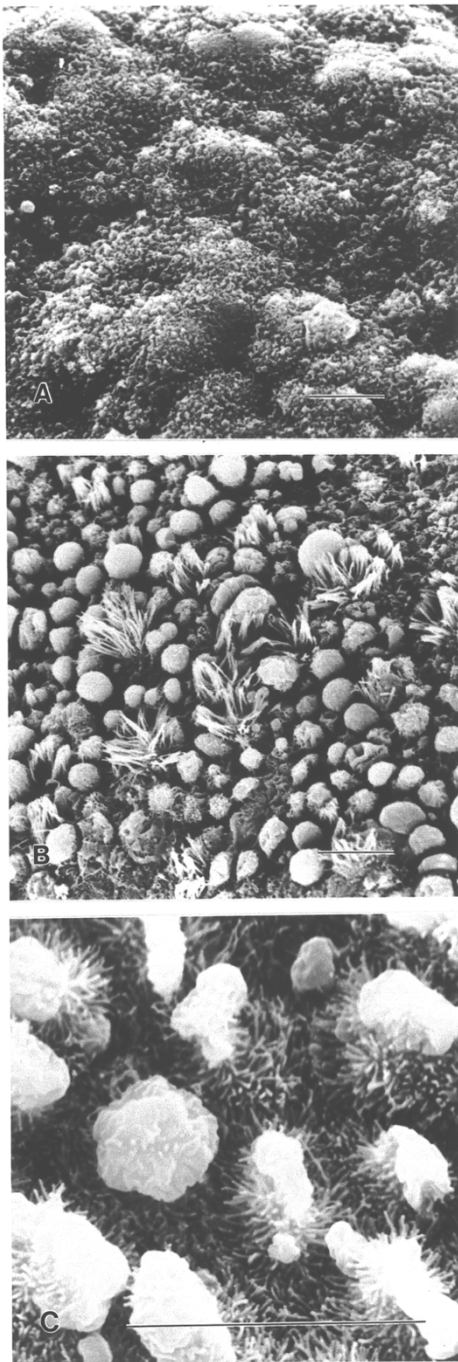


Figure 1
Scanning electron micrographs of 3 biopsies from the same patient (no. 5) demonstrates the variable response of the epithelium to exogenous hormone supplementation. (A) suboptimal epithelial appearance for D5 natural cycle displaying variable morphology of flattened, pleiomorphic cells without cell borders, variable microvilli coverage and structure and few cilia groups. (B) D5 of the short E2 cycle shows an abundance of fully developed uterodomes, (C) D7 of long E2 cycle shows developing uterodomes. Scale bar = 10 µm.

differential changes in the morphology of the secretory epithelium between equivalent biopsy days but did show a definite trend in an increase in abundance of uterodomes regardless of their maturational stage (Figure 3a;b).

Discussion

In some animals pinopods are known to be pinocytotic and are directly implicated in the implantation process [41,42,43] but in the human and other animals their function is unknown [9]. However the appearance of these structures at, or just prior to the time of implantation suggests they may play a functional role in the human secretory epithelium and implantation [3, 12, 39, 44].

In the normal 28 day menstrual cycle, uterodomes occur at D19-21 (5-7P) [44, 45]. However, in artificial cycles maintained with exogenous hormones, uterodomes have been shown to occur at D21-22 (7-8 P) suggesting that the window of receptivity in artificially induced cycles can be postponed [3, 39]. When sequential sampling was performed during a single natural or artificial cycle (non ovarian stimulated) the timing of uterodome appearance was found to vary by up to 5 days between women [8]. This individual variability could account for observations in the present study where uterodomes were not observed in 3 patients at D5 in the natural cycle. Other discrepancies between the menstrual and replacement cycles have also been shown to occur with delay in morphological maturation being observed in the mid luteal phase [13, 15, 46, 47]. The variability of response between individuals can be monitored with endometrial biopsy and specifically tailored HRT for patients on an IVF program.

The women in this study were infertile but not anovulatory and as such it was expected that their epithelium would be responding to their own hormones. Although a delayed epithelial response could be expected because of individual variability, an improved epithelial response to adjunctive hormone supplementation was also observed. With the advent of biopsy and SEM analysis we are able to directly observe the morphological integrity of the epithelium as compared to the assumed integrity deduced from standard hormone dose delivery, time of ovulation and serum hormone levels. This allows the epithelial response to be 'dated' so that timing of uterodome appearance can be predicted. Since the women acted as their own controls in this study, their natural and artificial cycles were assumed to have the same chronological sequence of endometrial development and as such Days 8 and 15 in the programmed cycles were = P1. In this study patients who displayed a delayed or suboptimal epithelium in the natural cycle did become preg-

nant with ET utilising the longer cycle (E14, 5P) thus suggesting that hormone supplementation is needed to bring the endometrial epithelium into a state of 'normal' morphology [48]. However this does not imply that pregnancy might not occur with a shorter cycle. It does suggest that the subsequent supplemented cycles may standardise the epithelial response [14, 49].

It has previously been observed that while the morphology of a normal secretory epithelium in a natural cycle [45] is not affected by an artificial cycle in some patients [24, 39], the integrity of the epithelium is not always preserved in one or other of the subsequent cycles and this suggests an out-of-phase epithelium that is either delayed or advanced [50,51,52,53]. [7] states "on average, pinopodes form earlier in stimulated cycles and later in hormone replacement cycles, compared with natural cycles", and that increasing the dose of hormones gives better results in achieving pregnancies. Providing sufficient E2 is given for endometrial priming [54], it is the duration of exposure to P, rather than the duration of E2 priming, that is a crucial factor in triggering endometrial receptivity [17, 18, 24, 55].

Our results help to demonstrate that in fact, the presence of uterodomes, and thus the 'nidation window', was delayed when hormone supplementation was administered. The results also demonstrate that utilising a short follicular phase cycle does not appear to compromise uterodome appearance, abundance and shape, and that hormone supplementation may produce a positive effect on the abundance of uterodomes.

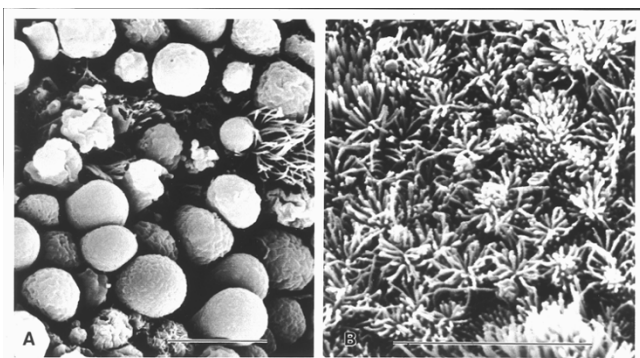


Figure 2
Scanning electron micrographs of the same patient (no. 1) demonstrates a shift in the nidation window with exogenous hormones. (A) An abundance of fully developed uterodomes are shown on D5 of the natural cycle. (B) D8 long E2 shows retarded epithelium suggestive of pinopod appearance 1-2 days later. Note clumping of swollen microvillous tips on protruding cells and secretory droplets. Scale bar = 10 µm.

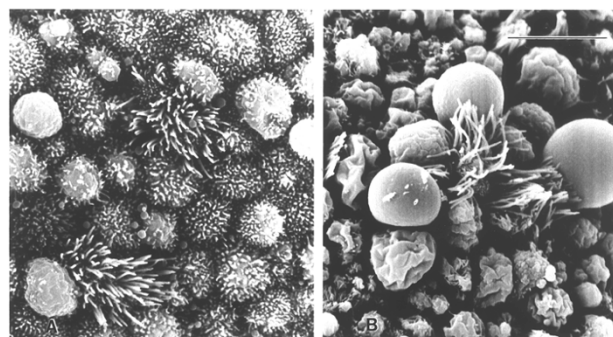


Figure 3
Scanning electron micrographs from the same patient (no. 7) at D5 in different cycles demonstrated an increase in abundance of uterodomes utilising exogenous hormones. Scale bar = 10 µm. (A) Epithelium displaying few uterodomes in the natural cycle (B) An increase in abundance of uterodomes after hormone supplementation is observed.

Women who demonstrated poor or suboptimal epithelium in their natural cycle were observed to show an improvement in epithelial characteristics and appearance of uterodomes with hormone supplementation cycles. Those with well developed epithelium in their natural cycles did not appear to benefit morphologically from hormone supplementation. If the appearance of uterodomes does herald the window of implantation, then consideration may be given to the usefulness of hormone supplementation in controlling future cycles in these individuals for timing ET. The findings of this study support the following observations that, (1) the consecutive cycles of hormone supplementation we used, while not identical, can delay the appearance of uterodomes, (2) the short E2 treatment did not alter the timed epithelial sequence apparent in an individual's natural cycle, (3) the longer E2 treatment influenced, by retarding, the timing of the epithelial characteristics in comparison to a shorter E2 treatment protocol, (4) in patients showing poor epithelial morphology in natural cycles, exogenous E2 and P supplementation may increase the abundance of uterodomes, which has been correlated to improved pregnancy rates [7].

In summary, since all patients displayed uterodomes in at least one of their cycles, it is likely that uterodome appearance at or just prior to the time of implantation may be an indicator of the functional integrity of the endometrium. While we have not demonstrated pregnancy rates in short proliferative cycles, this study provides further evidence that baseline biopsies and manipulation of the secretory epithelium is a useful tool for timing successful ET.

Competing interests

None declared.

References

- Rogers P, Murphy C, Cameron I, Leeton J, Hosie M, Beaton L, Macpherson A: **Uterine receptivity in women receiving steroid replacement therapy for premature ovarian failure: ultrastructural and endocrinological parameters** *Human Reproduction* 1989, **4**:349-54
- Martel D, Monier MN, Roche D, Psychoyos A: **Hormonal dependence of pinopode formation at the uterine luminal surface** *Human Reproduction*, 1991, **6**:597-603
- Psychoyos A, Nikas G: **Uterine pinopods as markers of uterine receptivity** *Ass. Reprod. Rev.* 1994, **4**:26-32
- Kolb BA, Paulson RJ: **The luteal phase of cycles utilizing controlled ovarian hyperstimulation and the possible impact of this hyperstimulation on embryo implantation** *American Journal of Obstetrics & Gynecology*, 1997, **176**:1262-7
- Paulson RJ, Sauer MV, Lobo RA: **Potential enhancement of endometrial receptivity in cycles using controlled ovarian hyperstimulation with antiprogesterins: a hypothesis** *Fertility & Sterility*, 1997, **67**:321-5
- Garcia-Velasco JA, Simon C, Ardiles G, Neuspiller F, Remohi J, Nikas G: **Assessment of endometrial responses to HRT using the detection of pinopods in women with endometriosis undergoing oocyte donation** *Fertil. Steril* 1998, **70** Suppl 1:242S
- Nikas G: **Pinopodes as markers of endometrial receptivity in clinical practice** *Human Reproduction* 1997, **14** Suppl 2:99-106
- Nikas G, Develioglou OH, Toner JP, Jones HW Jr: **Endometrial pinopodes indicate a shift in the window of receptivity in IVF cycles** *Human Reproduction* 1999, **14**:787-92
- Murphy CR: **Understanding the apical surface markers of uterine receptivity: pinopods or uterodomes?** *Human Reproduction* 2000, **15**:2451-2454
- Psychoyos A: **Hormonal control of uterine receptivity for nidation.** [Review] [32 refs] *Journal of Reproduction & Fertility - Supplement*, 1976:17-28
- Psychoyos A: **Uterine receptivity for nidation.** [Review] [32 refs] *Annals of the New York Academy of Sciences* 1986, **476**:36-42
- Murphy CR: **The cytoskeleton of uterine epithelial cells: a new player in uterine receptivity and the plasma membrane transformation** *Human Reproduction Update* 1995, **1**:567-80
- Lutjen P, Trounson A, Leeton J, Findlay J, Wood C, Renou P: **The establishment and maintenance of pregnancy using in vitro fertilization and embryo donation in a patient with primary ovarian failure** *Nature* 1984, **307**:174-5
- Navot D, Laufer N, Kopolovic J, Rabinowitz R, Birkenfeld A, Lewin A, Granat M, Margalioth EJ, Schenker JG: **Artificially induced endometrial cycles and establishment of pregnancies in the absence of ovaries** *New England Journal of Medicine* 1986, **314**:806-11
- Navot D, Anderson TL, Drosch K, Scott RT, Kreiner D, Rosenwaks Z: **Hormonal manipulation of endometrial maturation** *Journal of Clinical Endocrinology & Metabolism*, 1989, **68**:801-7
- Steingold K, Stumpf P, Kreiner D, Liu HC, Navot D, Rosenwaks Z: **Estradiol and progesterone replacement regimens for the induction of endometrial receptivity** *Fertility & Sterility*, 1989, **52**:756-60
- Lelaidier C, de Ziegler D, Gaetano J, Hazout A, Fernandez H, Frydman R: **Controlled preparation of the endometrium with exogenous oestradiol and progesterone: a novel regimen not using a gonadotrophin-releasing hormone agonist** *Human Reproduction* 1992, **7**:1353-6
- de Ziegler D, Cornel C, Bergeron C, Hazout A, Bouchard P, Frydman R: **Controlled preparation of the endometrium with exogenous oestradiol and progesterone in women having functioning ovaries** *Fertility & Sterility*, 1991, **56**:851-5
- Serhal PF, Craft IL: **Ovum donation - a simplified approach** *Fertility & Sterility* 1987, **48**:265-9
- Serhal PF, Craft IL: **Oocyte donation in 61 patients** *Lancet* 1989, **1**:1185-7
- Navot D, Bergh PA, Williams G, Garrisi GJ, Guzman I, Sandler B, Fox J, Schreiner-Engel P, Hofmann GE, Grunfeld L: **An insight into early reproductive processes through the in vivo model of ovum donation** *Journal of Clinical Endocrinology & Metabolism* 1991, **72**:408-14
- Younis JS, Mordel N, Ligovetzky G, Lewin A, Schenker JG, Laufer N: **The effect of a prolonged artificial follicular phase on endometrial development in an oocyte donation program** *Journal of in Vitro Fertilization & Embryo Transfer* 1991, **8**:84-8
- Younis JS, Mordel N, Lewin A, Simon A, Schenker JG, Laufer N: **Artificial endometrial preparation for oocyte donation: the effect of estrogen stimulation on clinical outcome** *Journal of Assisted Reproduction & Genetics* 1992, **9**:222-7
- Massai MR, Bergeron C, Martel D, de Ziegler D, Meduri G, Psychoyos A, Frydman R, Bouchard P: **Physiological oestradiol and progesterone replacement cycles in women with ovarian failure: a model to study endometrial maturation and sex steroid receptor regulation by exogenous hormones** *Human Reproduction* 1993, **8**:1828-34
- Shapiro H, Cowell C, Casper RF: **The use of vaginal ultrasound for monitoring endometrial preparation in a donor oocyte program** *Fertil Steril* 1993, **59**:1055-8
- Simon A, Hurwitz A, Pharhat M, Revel A, Zentner BS, Laufer N: **A flexible protocol for artificial preparation of the endometrium without prior gonadotropin-releasing hormone agonist suppression in women with functioning ovaries undergoing frozen-thawed embryo transfer cycles** *Fertil Steril* 1999, **71**:609-13
- Younis JS, Simon A, Laufer N: **Endometrial preparation: lessons from oocyte donation** *Fertil Steril* 1996, **66**:873-84
- Leeton J, Rogers P, King C, Healy D: **A comparison of pregnancy rates for 131 donor oocyte transfers using either a sequential or fixed regime of steroid replacement therapy** *Human Reproduction* 1991, **6**:299-301
- Younis JS, Ezra Y, Sherman Y, Simon A, Schenker JG, Laufer N: **The effect of estradiol depletion during the luteal phase on endometrial development** *Fertil Steril* 1994, **62**:103-7
- Remohi J, Gutierrez A, Cano F, Ruiz A, Simon C, Pellicer A: **Long oestradiol replacement in an oocyte donation programme** *Human Reproduction* 1995, **10**:1387-91
- Yaron Y, Amit A, Mani A, Yovel I, Kogosowski A, Peyser MR, David MP, Lessing JB: **Uterine preparation with estrogen for oocyte donation: assessing the effect of treatment duration on pregnancy rates** *Fertil Steril* 1995, **63**:1284-6
- Check JH, Adelson H, Lurie D, Jamison T: **Effect of the short follicular phase on subsequent conception** *Gynecologic & Obstetric Investigation* 1992, **34**:180-3
- Rodriguez-Rigau LJ, Shenoi PN, Smith KD, Steinberger E: **The relationship between the lengths of the follicular and luteal phases of the menstrual cycle and the fertility potential of the female** *Fertil Steril* 1983, **39**:856-7
- de Ziegler D: **Hormonal control of endometrial receptivity** *Human Reproduction* 1995, **10**:4-7
- Fraser D, Whitehead MI, Endacott J, Morton J, Ryder TA, Pryse-Davies J: **Are fixed-dose oestrogen/progesterone combinations ideal for all HRT users?** *Br J Obstet Gynaecol* 1989, **96**:776-82
- Li TC, Dockery P, Ramsewak SS, Klentzeris L, Lenton EA, Cooke ID: **The variation of endometrial response to a standard hormone replacement therapy in women with premature ovarian failure. An ultrasonographic and histological study** *Br J Obstet Gynaecol* 1991, **98**:656-61
- Rogers PA, Polson D, Murphy CR, Hosie M, Susil B, Leoni M: **Correlation of endometrial histology, morphology, and ultrasound appearance after different stimulation protocols for in vitro fertilization** *Fertil Steril* 1991, **55**:583-7
- Simon A, Hurwitz A, Zentner BS, Bdolah Y, Laufer N: **Transfer of frozen-thawed embryos in artificially prepared cycles with and without prior gonadotrophin-releasing hormone agonist suppression: a prospective randomized study** *Human Reproduction* 1998, **13**:2712-7
- Nikas G, Drakakis P, Loutradis D, Mara-Skoufari C, Koumantakis E, Michalakis S, Psychoyos A: **Uterine pinopodes as markers of the 'nidation window' in cycling women receiving exogenous oestradiol and progesterone** *Human Reproduction* 1995, **10**:1208-13
- Nikas G: **Cell-surface morphological events relevant to human implantation** *Human Reproduction* 1999, **14** Suppl 2:37-44
- Enders AC, Nelson DM: **Pinocytotic activity of the uterus of the rat** *American Journal of Anatomy* 1973, **138**:277-99

42. Parr MB, Parr EL: **Uterine luminal epithelium: protrusions mediate endocytosis, not apocrine secretion, in the rat** *Biology of Reproduction* 1974, **11**:220-33
43. Parr MB, Parr EL: **Endocytosis in the uterine epithelium of the mouse** *Journal of Reproduction & Fertility* 1977, **50**:151-3
44. Nikas G, Psychoyos A: **Uterine pinopodes in peri-implantation human endometrium. Clinical relevance** *Annals of the New York Academy of Sciences* 1997, **816**:129-42
45. Martel D, Malet C, Gautray JP, Psychoyos A: **Surface changes of the luminal uterine epithelium during the human menstrual cycle: a scanning electron microscopic study** In: *The Endometrium: Hormonal Impacts*. Plenum Publishing Corporation 1981, :15-29
46. Rosenwaks Z: **Donor eggs: their application in modern reproductive technologies** *Fertil Steril* 1987, **47**:895-909
47. Li TC, Klentzeris L, Barratt C, Warren MA, Cooke S, Cooke ID: **A study of endometrial morphology in women who failed to conceive in a donor insemination programme** *Br J Obstet Gynaecol* 1993, **100**:935-8
48. Klentzeris LD, Li TC, Dockery P, Cooke ID: **The endometrial biopsy as a predictive factor of pregnancy rate in women with unexplained infertility** *European Journal of Obstetrics, Gynecology, & Reproductive Biology* 1992, **45**:119-24
49. Dehou MF, Lejeune B, Arijs C, Leroy F: **Endometrial morphology in stimulated in vitro fertilization cycles and after steroid replacement therapy in cases of primary ovarian failure** *Fertil Steril* 1987, **48**:995-1000
50. Davis OK, Berkeley AS, Naus GJ, Cholst IN, Freedman KS: **The incidence of luteal phase defect in normal, fertile women, determined by serial endometrial biopsies** *Fertil Steril* 1989, **51**:582-6
51. Grunfeld L, Sandler B, Fox J, Boyd C, Kaplan P, Navot D: **Luteal phase deficiency after completely normal follicular and peri-ovulatory phases** *Fertil Steril* 1989, **52**:919-23
52. Davies MC, Anderson MC, Mason BA, Jacobs HS: **Oocyte donation: the role of endometrial receptivity** *Human Reproduction* 1990, **5**:862-9
53. Hofmann GE, Thie J, Scott RT Jr, Navot D: **Endometrial thickness is predictive of histologic endometrial maturation in women undergoing hormone replacement for ovum donation** *Fertil Steril*, 1996, **66**:380-3
54. Li TC, Cooke ID, Warren MA, Goolamallee M, Graham RA, Aplin JD: **Endometrial responses in artificial cycles: a prospective study comparing four different oestrogen dosages** *Br J Obstet Gynaecol* 1992, **99**:751-6
55. de Ziegler D, Bergeron C, Cornel C, Medalie DA, Massai MR, Milgrom E, Frydman R, Bouchard P: **Effects of luteal estradiol on the secretory transformation of human endometrium and plasma gonadotropins** *Journal of Clinical Endocrinology & Metabolism*, 1992, **74**:322-31

Pre-publication history

The pre-publication history for this paper can be accessed here:

<http://www.biomedcentral.com/content/backmatter/1471-2334-1-6-b1.pdf>

Publish with **BioMed Central** and every scientist can read your work free of charge

"BioMedcentral will be the most significant development for disseminating the results of biomedical research in our lifetime."

Paul Nurse, Director-General, Imperial Cancer Research Fund

Publish with **BMC** and your research papers will be:

- available free of charge to the entire biomedical community
- peer reviewed and published immediately upon acceptance
- cited in PubMed and archived on PubMed Central
- yours - you keep the copyright



Submit your manuscript here:

<http://www.biomedcentral.com/manuscript/>

editorial@biomedcentral.com