

CORRECTION

Open Access



Correction to: Pregnant women's clinical characteristics, intrapartum interventions, and duration of labour in urban China: a multi-center cross-sectional study

Chunyi Gu^{1,2}, Xiaojiao Wang², Zhijie Zhang³, Simone Schwank⁴, Chunxiang Zhu², Zheng Zhang² and Xu Qian^{1,5*}

**Correction to: *BMC Pregnancy Childbirth* (2020) 20:386
<https://doi.org/10.1186/s12884-020-03072-x>**

Following publication of the original article [1], the authors identified an error in Fig. 1. The correct figure is given below.

The original article has been corrected.

Author details

¹Department of Maternal, Child and Adolescent Health, School of Public Health, Fudan University, Shanghai, China. ²Department of Nursing, Obstetrics and Gynaecology Hospital of Fudan University, Shanghai, China. ³Department of Epidemiology, School of Public Health, Fudan University, Shanghai, China. ⁴Department of Women and Children's Health, Reproductive Health, Karolinska Institutet, Stockholm, Sweden. ⁵Global Health Institute, Fudan University, Shanghai, China.

Published online: 27 July 2020

Reference

1. Gu C, et al. Pregnant women's clinical characteristics, intrapartum interventions, and duration of labour in urban China: a multi-center cross-sectional study. *BMC Pregnancy Childbirth*. 2020;20:386 <https://doi.org/10.1186/s12884-020-03072-x>.

The original article can be found online at <https://doi.org/10.1186/s12884-020-03072-x>.

* Correspondence: xqian@shmu.edu.cn

¹Department of Maternal, Child and Adolescent Health, School of Public Health, Fudan University, Shanghai, China

⁵Global Health Institute, Fudan University, Shanghai, China

Full list of author information is available at the end of the article



© The Author(s). 2020 **Open Access** This article is licensed under a Creative Commons Attribution 4.0 International License, which permits use, sharing, adaptation, distribution and reproduction in any medium or format, as long as you give appropriate credit to the original author(s) and the source, provide a link to the Creative Commons licence, and indicate if changes were made. The images or other third party material in this article are included in the article's Creative Commons licence, unless indicated otherwise in a credit line to the material. If material is not included in the article's Creative Commons licence and your intended use is not permitted by statutory regulation or exceeds the permitted use, you will need to obtain permission directly from the copyright holder. To view a copy of this licence, visit <http://creativecommons.org/licenses/by/4.0/>. The Creative Commons Public Domain Dedication waiver (<http://creativecommons.org/publicdomain/zero/1.0/>) applies to the data made available in this article, unless otherwise stated in a credit line to the data.

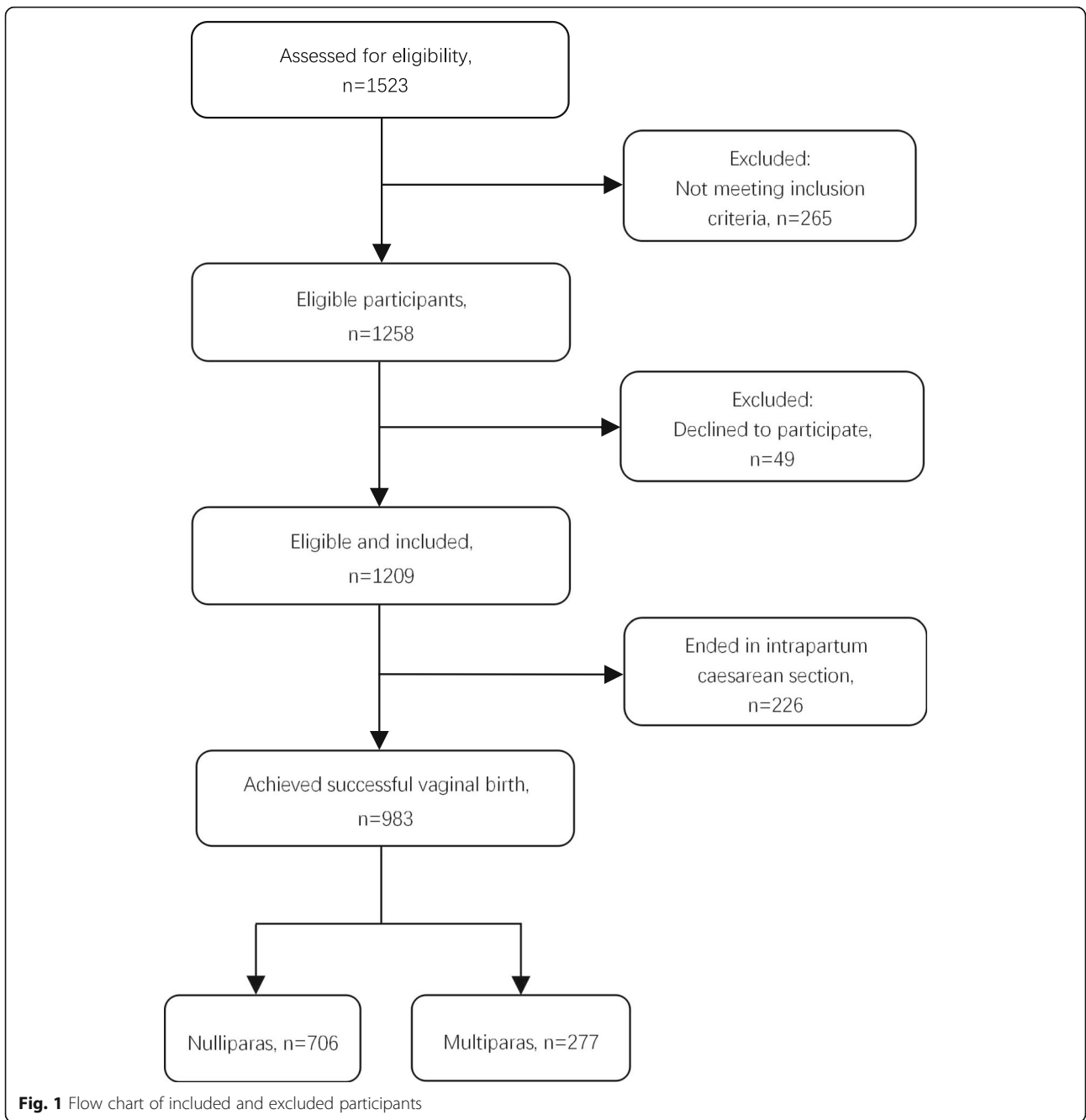


Fig. 1 Flow chart of included and excluded participants