

**ERRATUM**

**Open Access**

# Erratum: Cost-effectiveness of strategies to improve the utilization and provision of maternal and newborn health care in low-income and lower-middle-income countries: a systematic review

Lindsay Mangham-Jefferies<sup>1\*</sup>, Catherine Pitt<sup>1</sup>, Simon Cousens<sup>2</sup>, Anne Mills<sup>1</sup> and Joanna Schellenberg<sup>3</sup>

## Erratum

During the publication process of this article [1] a number of errors were unfortunately introduced into the references included in figure three, and were not noticed until after the final version had been published. The corrected version can be seen here (Figure 1).

## Author details

<sup>1</sup>Department of Global Health and Development, London School of Hygiene and Tropical Medicine, London, UK. <sup>2</sup>Department of Infectious Disease Epidemiology, London School of Hygiene and Tropical Medicine, London, UK. <sup>3</sup>Department of Disease Control, London School of Hygiene and Tropical Medicine, London, UK.

Received: 16 January 2015 Accepted: 16 January 2015

Published online: 21 March 2015

## Reference

1. Mangham-Jefferies L, Pitt C, Cousens S, Mills A, Schellenberg J. Cost-effectiveness of strategies to improve the utilization and provision of maternal and newborn health care in low-income and lower-middle – income countries: a systematic review. *BMC Pregnancy and Childbirth*. 2014;14:243.

\* Correspondence: [lindsay.mangham-jefferies@lshtm.ac.uk](mailto:lindsay.mangham-jefferies@lshtm.ac.uk)

<sup>1</sup>Department of Global Health and Development, London School of Hygiene and Tropical Medicine, London, UK

**Submit your next manuscript to BioMed Central and take full advantage of:**

- Convenient online submission
- Thorough peer review
- No space constraints or color figure charges
- Immediate publication on acceptance
- Inclusion in PubMed, CAS, Scopus and Google Scholar
- Research which is freely available for redistribution

Submit your manuscript at  
[www.biomedcentral.com/submit](http://www.biomedcentral.com/submit)



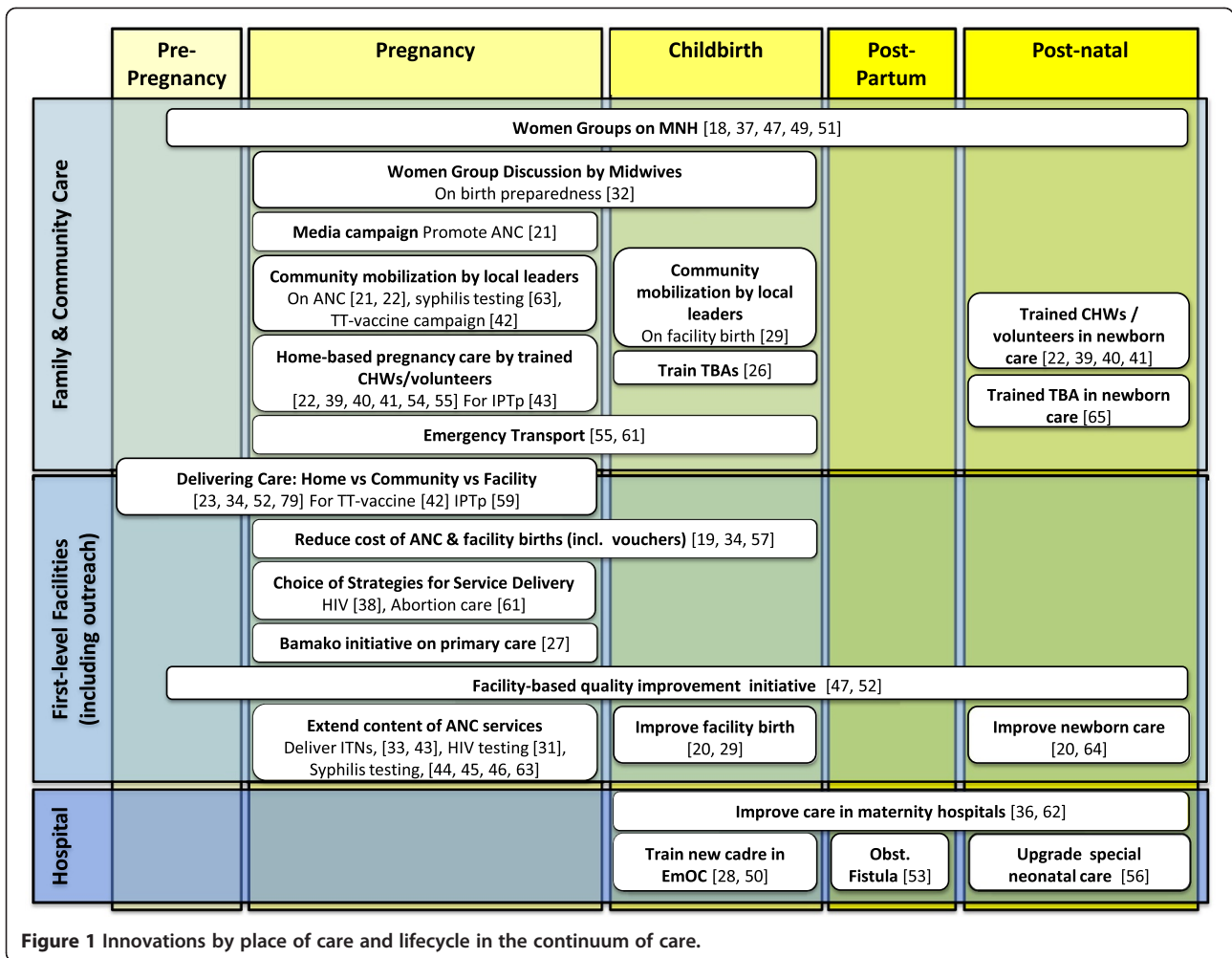


Figure 1 Innovations by place of care and lifecycle in the continuum of care.