

Proceedings

Open Access

New research models and novel signal analysis in studies on preterm labor: a key to progress?

Piotr Pierzynski¹, Edward Oczeretko², Piotr Laudanski¹ and Tadeusz Laudanski*¹

Address: ¹Department of Pathophysiology of Pregnancy, Medical University of Białystok, M.C. Skłodowskiej 24a, 15-276 Białystok, Poland and ²Faculty of Nursing, the Academy of Agribusiness in Lomza, ul. Wojska Polskiego 161, 18-402 Lomża, Poland

Email: Piotr Pierzynski - piotr.pierzynski@wp.pl; Edward Oczeretko - eddoczer@ii.uwb.edu.pl; Piotr Laudanski - plauda@amb.edu.pl; Tadeusz Laudanski* - laudan@amb.edu.pl

* Corresponding author

from Special Non-Invasive Advances in Fetal and Neonatal Evaluation Network of Excellence, First and Second European Workshops on Preterm Labour Tarragona, Spain. 21–22 September 2006 and 22 June 2005

Published: 1 June 2007

BMC Pregnancy and Childbirth 2007, 7(Suppl 1):S6 doi:10.1186/1471-2393-7-S1-S6

This article is available from: <http://www.biomedcentral.com/1471-2393/7/S1/S6>

© 2007 Pierzynski et al; licensee BioMed Central Ltd.

This is an open access article distributed under the terms of the Creative Commons Attribution License (<http://creativecommons.org/licenses/by/2.0>), which permits unrestricted use, distribution, and reproduction in any medium, provided the original work is properly cited.

Abstract

Preterm labor affects up to 20% of pregnancies, is considered a main cause of associated neonatal morbidity and mortality and is responsible for neonatal care costs of multimillion euros. In spite of that, the commercial market for this clinical indication is rather limited, which may be also related to high liability. Consequently, with only a few exceptions, preterm labor is not in the orbit of great interest of the pharmaceutical industry. Coordinated effort of research community may bring the change and help required to reduce the influence of this multifactorial syndrome on society. Between the novel techniques that are being explored in a SAFE (The Special Non-Invasive Advances in Fetal and Neonatal Evaluation Network) group, there are new research models of preterm labor as well as novel methodology of analysis of biological signals. In this article, we briefly describe new clinical and nonclinical human models of preterm labor as well as summarize some novel methods of data processing and analysis that may be used in the context of preterm labor.

Background

Preterm labor now constitutes the major cause for neonatal mortality in developed countries. In spite of decades of ongoing research, its pathophysiology still remains not fully discovered [1,2], and consequently – the specific pharmacologic armory to treat preterm labour is not large. Notwithstanding multimillion euro costs of neonatal care, the annual percentage of cases of preterm birth is relatively limited. As a result, most of the pharmaceutical industry considers this segment of market as small one

and which additionally is connected to high liability, meaning: not attractive [3]. However, this hides the fact that the *numbers* of preterm births in Europe reaches hundreds of thousands.

Ethical issues in clinical studies significantly limit the possibility of using placebo-controlled protocols. On the other hand, the application of alternative protocols drastically reduces the chances of drug candidates in the process of registration. The effect of combination of above-mentioned

factors creates the situation where very few medicines are labeled for use in pregnancy, and especially, preterm labor. Considering the whole situation surrounding preterm labor, it appears that only a coordinated effort of research networks, such as SAFE (The Special Non-Invasive Advances in Fetal and Neonatal Evaluation Network) and those involved in preterm labour, is capable of bringing the new data that could be of potential use in discerning its pathophysiology and point to new pharmacological targets.

Therefore, in this setting there is much to be done towards solving this important problem. Here, we put forward new clinical and non-clinical models of uterine contractile activity together with new methods towards the detection and processing of biological signals that can be used as significant examples to build upon between collaborating partners.

New research models of preterm labor

One of the major concerns in studies on preterm labor, especially on uterine contractile activity is that practically none of the models is adequately sufficient and easy to use – mice uteri lack V_{1a} vasopressin receptor [4], rats present with spontaneous uterine contractility [5] and labor in ginea pigs is characterized by the desensitization of the progesterone receptor [6]. Studies on primates may be considered the most valuable [7], however, the accessibility of this model is significantly reduced by its costs and ethical issues. Consequently, there is a need for both *in vivo* and *in vitro* models that could closely reflect the reactivity of human myometrium/uterus, serving in pathophysiological/pharmacologic studies.

Valuable information on the biology and pharmacology of uterine contractile activity may be provided by *in vitro* studies on uterine strips isolated from human pregnant/non-pregnant women as well as *in vivo* human or animal models [8-11]. One of the modifications of the *in vitro* model of contractility of human myometrium presented in the literature [12,13], may involve utilization of pregnant strips sampled from patients delivered preterm. In the study conducted by Pierzynski *et al.* [14] we confirmed that barusiban, a novel oxytocin antagonist effectively reduced oxytocin-induced contractions of both preterm and term myometrium. Such a model, although more complicated, is to our knowledge the only one describing human myometrium sampled from women delivered preterm and provides additional support for other *in vitro* studies.

In vitro studies are usually preceding clinical application of drug candidates. As ethical specificity practically excludes testing on pregnant volunteers, there is a hectic need for optimal *in vivo* model. Consideration should,

therefore, be given to the uterus of non-pregnant women – where, aparting from the lack of significant rise in oxytocin receptors as seen in late pregnancy [15], most of the regulatory mechanisms remains unaltered (i.e. reaction to vasopressin or prostaglandins). Measurements of intrauterine pressure taken in two distant parts of the non pregnant uterus (isthmus and fundus), thanks to a novel analysis of signals, delivered new data on significant differences in spatial characteristics of contractions [16-18]. Moreover, a model of contractility of non-pregnant uterus may be used for the assessment of the influence of novel drugs reducing uterine contractions. In one of the latest publications, we explored the influence of short time, low dose tamoxifen treatment on parameters of uterine contractile activity of dysmenorrhoeic women [19], showing potentially significant direct influence on parameters of contractile activity; importantly, these would not be detected by conventional methods of signal analysis. Even though tamoxifen treatment may not find its place in obstetrics, the study does illustrate that similar methodology may be applied in the assessments of other drug candidates, such as novel oxytocin antagonists or calcium channel blockers. Multifocal assessments of uterine contractile activity in pregnant women may be performed by the measurements of electric [20] or magnetic [21] activity of the uterus, the novel approach of assessment of uterine magnetic resonance was recently utilized for highly advanced mathematical construction of the virtual atlas of functional biology of human uterus [22]. Special analysis of data may be helpful in establishing interrelations between various parameters of contractions such as synchronization or propagation and clinical outcome.

Novel analysis of signals in studies on preterm labor

Our advanced methods of signal processing and analysis reported here give added support to the potential benefit of new preclinical and clinical models of preterm labor. Such an attitude could provide new insights into "well known" phenomena such as uterine contractile activity. Classical modalities of signal analysis, such as time domain and frequency domain-based analysis are frequently insufficient in providing significant biologic data on uterine contractile activity. In the classical, so called "time domain" analysis, studied parameters including area under curve recording (AUC), maximal amplitude of contractions and various statistical quantities (mean, standard deviation, median, skewness). Although easily computed even for short time recordings [23], these are not sensitive enough to characterize discrete, but potentially important changes in contractile activity. Also, in the frequency domain, the Fourier transform gives no information on the localization of the individual frequency components [24,25], as it provides a globalised integrated from over the whole signal.

Contrary to the Fourier decomposition, the continuous and discrete wavelet transforms allow extracting local and global variations of the recorded contractions. Graphical presentation of such data (scalograms) shows the distribution of energy in the time-frequency plane. For normal contractions, scalograms of the fundal and cervical signals are very similar. In the case of dysmenorrhic contractions, patterns are quite different [25]. Studies on pregnant women using non-invasive approaches are currently in progress.

In the case of bivariate sets of signals (i.e. recorded in two distant locations of the uterus), which contain two simultaneously recorded time series, it appears clinically important to understand how the variables interact. Cross-correlation function can be employed to analyze the asso-

ciation between two time series [18,19,26]. This function is sensitive to the phase differences and can be used to identify time delays (time shifts) between two signals.

Time shifts may be an important indicator of propagation of uterine contractions, which could be altered in women in preterm labor. Figure 1 shows the running cross-correlation and the instantaneous time shifts for normal uterine activity. Standardized sets of signals are obtained after subtraction of the mean from each sample of the signal. The values of the cross-correlation coefficients correspond to the gray levels, as it is shown on the scale bar, which is located on the right of the running map (Figure 1, panel B (b)). Signals of the patient with fibromyomas have disturbed synchronization.

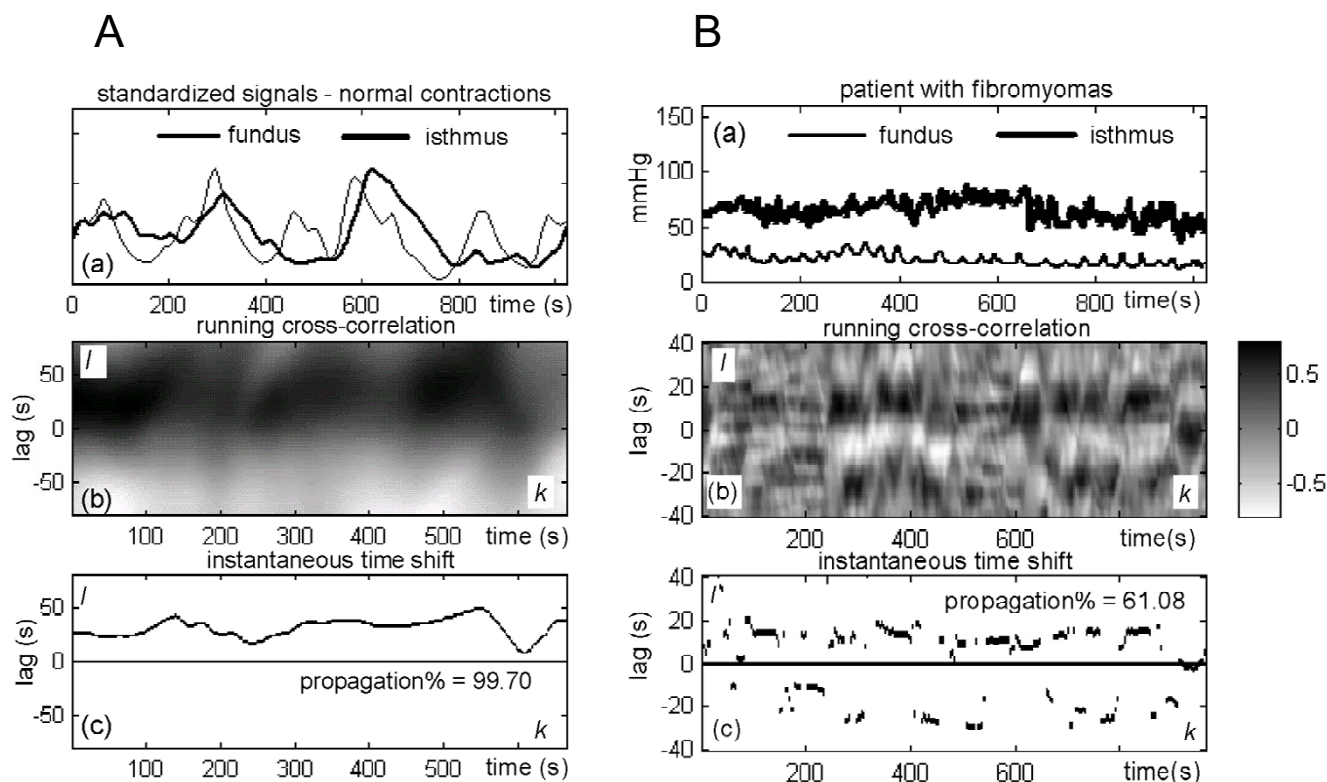


Figure 1
Graphical presentation of synchronization of contractions of normal (panel A) and fibromyomatous (panel B) uterus. Panel A shows the synchronization of the recording for the normal uterine activity. (a) Uterine contractions (standardized signals); (b) Running cross-correlation functions (values of the cross-correlation coefficients correspond to the gray levels); (c) Instantaneous time shift shows the maximal values of the cross-correlation coefficients for fixed time. Panel B illustrates the synchronization for the uterine activity in patients with fibromyomas; (a) Uterine contractions; (b) Running cross-correlation functions; (c) Instantaneous time shift. In panel A, the maximal values of the cross-correlation coefficients are mainly located in the area of the positive time lags. In this area there are 99.70 per cent points of the instantaneous time shift curve. So, the propagation% parameter equals 99.70. In this case, the fundal time series mostly runs ahead of the cervical one. In panel B, the maximal values of the cross-correlation coefficients are located in the areas of the positive and negative time lags. In the area of the positive time lags are located 61.08 per cent points of the instantaneous time shift curve. In this case we have disturbed synchronization.

Fractal analysis serves another example for advanced data analysis to be utilized in the studies on uterine contractile activity. Fractals, a relatively new analytical concept of the last few decades, have been successfully applied in many areas of science and technology. We performed a comparative study of ten methods of fractal analysis of signals of intrauterine pressure. We found significant differences between uterine contractions in healthy volunteers and women with primary dysmenorrhoea [17]. There was a correlation between the adjacent elements of the investigated signals. Consequently, the values of fractal dimension can be objective measures for classifications of uterine contraction signals and may be used in studies on preterm labor.

Nonlinear dynamics is one more example of advanced data analysis that could be implemented for uterine contractility signals. In recent years the physiological signals obtained from the complex systems like the brain or the heart have been investigated for possible deterministic chaotic behavior. The human uterus is undoubtedly a complex system. Smooth muscles comprising the myometrium interact in a complex manner. We used the techniques of surrogate data analysis to testing for nonlinearity in the uterine contraction signals. The results showed that the spontaneous uterine contractions are considered to contain nonlinear features [16] which indicated that nonlinear dynamics may increase the accessibility of data for the assessment of biology of uterus, and consequently, the nature of preterm labor.

Conclusion

After decades of continuous research, especially as no breakthrough in the interest of pharmaceutical industry can be seen, only well-planned and coordinated international programs may provide additional data of different aspects of preterm labor. Possible directions for future research may be related to development of new biophysical methods of evaluation of uterine activity (allowing new pharmacologic studies) together with implementation of novel methodology of analysis of signals and diagnosis of molecular genetic malfunctions.

Competing interests

The authors declare that they have no competing interests.

Authors' contributions

All the authors (PP, EO, PL and TL) have made substantive and equal intellectual contributions to a published study and have been involved in drafting the manuscript or revising it critically for important intellectual content.

Acknowledgements

This work was partly financed by grant no. KBN 2 PO5E 11927 from the Polish State Committee for Scientific Investigation. The authors wish to acknowledge Ferring Pharmaceuticals, Perkin Elmer and Serono for cover-

ing the publication costs and financial support of the SAFE (The Special Non-Invasive Advances in Fetal and Neonatal Evaluation Network, LSHB-CT-2004-503243) in the organization of 2005 and 2006 workshops on preterm labour.

This article has been published as part of *BMC Pregnancy and Childbirth* Volume 7, Supplement 1, 2007: Proceedings of the First and Second European Workshops on Preterm Labour of the Special Non-Invasive Advances in Fetal and Neonatal Evaluation (SAFE) Network of Excellence. The full contents of the supplement are available online at <http://www.biomedcentral.com/1471-2393/7?issue=S1>.

References

- Hertelendy F, Zakar T: **Regulation of myometrial smooth muscle functions.** *Curr Pharm Des* 2004, **10(20)**:2499-2517.
- Lopez Bernal A: **Mechanisms of labour-biochemical aspects.** *BJOG* 2003, **110(Suppl 20)**:39-45.
- Goodwin TM: **The Gordian knot of developing tocolytics.** *J Soc Gynecol Investig* 2004, **11(6)**:339-341.
- Kawamata M, Mitsui-Saito M, Kimura T, Takayanagi Y, Yanagisawa T, Nishimori K: **Vasopressin-induced contraction of uterus is mediated solely by the oxytocin receptor in mice, but not in humans.** *Eur J Pharmacol* 2003, **472(3)**:229-234.
- Doret M, Mellier G, Gaucherand P, Saade GR, Benchaib M, Frutoso J, Pasquier JC: **The in vitro effect of dual combinations of ritodrine, nicardipine and atosiban on contractility of pregnant rat myometrium.** *BJOG* 2003, **110(8)**:731-734.
- Glasier MA, Hobkirk R: **Nuclear receptors for progesterone and estradiol in the guinea pig uterine compartment during gestation.** *Steroids* 1993, **58(10)**:478-483.
- Reinheimer TM, Bee WH, Resendez JC, Meyer JK, Haluska GJ, Chellman GJ: **Barusiban, a new highly potent and long-acting oxytocin antagonist: pharmacokinetic and pharmacodynamic comparison with atosiban in a cynomolgus monkey model of preterm labor.** *J Clin Endocrinol Metab* 2005, **90(4)**:2275-2281.
- Sexton D, O'Reilly M, Friel A, Morrison J: **Functional effects of 17alpha-hydroxyprogesterone caproate (17P) on human myometrial contractility in vitro.** *Reprod Biol Endocrinol* 2004, **2(1)**:80.
- Newman R, Richmond G, Winston Y, Hamer C, Katz M: **Antepartum uterine activity characteristics differentiating true from threatened preterm labor.** *Obstet Gynecol* 1990, **71(Suppl 1)**:39S-41S.
- Nagarajan R, Eswaran H, Wilson J, Murphy P, Lowery C, Preissl H: **Analysis of uterine contractions: a dynamical approach.** *J Matern Fetal Neonatal Med* 2003, **14(1)**:8-21.
- Buhmschi C, Boyle M, Garfield R: **Electrical activity of the human uterus during pregnancy as recorded from the abdominal surface.** *Obstet Gynecol* 1997, **90(1)**:102-111.
- Modzelewska B, Kostrzevska A, Sipowicz M, Kleszczewski T, Batra S: **Apamin inhibits NO-induced relaxation of the spontaneous contractile activity of the myometrium from non-pregnant women.** *Reprod Biol Endocrinol* 2003, **1**:8.
- Bossmar T, Akerlund M, Fantoni G, Szamatowicz J, Melin P, Maggi M: **Receptors for and myometrial responses to oxytocin and vasopressin in preterm and term human pregnancy: effects of the oxytocin antagonist atosiban.** *Am J Obstet Gynecol* 1994, **171(6)**:1634-1642.
- Pierzynski P, Lemancewicz A, Reinheimer T, Akerlund M, Laudanski T: **Inhibitory effect of barusiban and atosiban on oxytocin-induced contractions of myometrium from preterm and term pregnant women.** *J Soc Gynecol Investig* 2004, **11(6)**:384-387.
- Carbillon L, Seince N, Uzan M: **Myometrial maturation and labour.** *Ann Med* 2001, **33(9)**:571-578.
- Oczeretko E, Kitlas A, Swiatecka J, Borowska M, Laudanski T: **Non-linear dynamics in uterine contractions analysis.** In *Fractals in Biology and Medicine, Volume IV* Volume IV. Edited by: Losa G, Merlini D, Nonnemacher T, Weibel E. Basel: Birkhäuser Verlag; 2005:215-222.
- Oczeretko E, Kitlas A, Swiatecka J, Laudanski T: **Fractal analysis of the uterine contractions.** *Rivista di Biologia/Biology Forum* 2004, **97(3)**:499-504.
- Oczeretko E, Kitlas A, Borowska M, Swiatecka J, Laudanski T: **Uterine contractility: Visualization of synchronization measures**

- in two simultaneously recorded signals. *Ann NY Acad Sci* 2007 in press.
19. Pierzynski P, Swiatecka J, Oczeretko E, Ludański T, Batra S, Laudanski T: **Effect of short-term, low-dose treatment with tamoxifen in patients with primary dysmenorrhea.** *Gynecol Endocrinol* 2006, **22(12)**:698-703.
 20. Snowden S, NAB S, JJ W: **A digital system for recording the electrical activity of the uterus.** *Physiol Meas* 2001, **22**:25-40.
 21. Eswaran H, Preissl H, Wilson JD, Murphy P, Robinson SE, Lowery CL: **First magnetomyographic recordings of uterine activity with spatial-temporal information with a 151-channel sensor array.** *Am J Obstet Gynecol* 2002, **187(1)**:145-151.
 22. Holden AV, Pan L, Blanks AM, Evans CJ, Kharche S, Simpson NAB, Smye S, Taggart MJ, Snowden S, Taggart MJ, Walker JJ, Zhang H: **Towards an electrophysiological functional atlas of the uterus in premature and full term labour.** *Proceedings of the MICCAI Workshop – From Statistical Atlases to Personalized Models: Understanding Complex Diseases in Populations and Individuals.* 6 October 2006; Copenhagen, Denmark .
 23. Szamatowicz J, Laudanski T, Bulkszas B, Akerlund M: **Fibromyomas and uterine contractions.** *Acta Obstet Gynecol Scand* 1997, **76**:973-976.
 24. Borowska M, Oczeretko E, Kitlas A, Swiatecka J, Laudanski T: **Power spectral analysis of the uterine contraction signals: fast Fourier transform and autoregressive modelling.** *Polish J Environm Stud* 2006, **15**:122-125.
 25. Oczeretko E, Swiatecka J, Laudanski T: **Uterine contractility signals – an introduction to wavelet analysis.** *Annales Academiae Medicae Bialostocensis* 2003, **38**:135-140.
 26. Oczeretko E, Swiatecka J, Kitlas A, Laudanski T, Pierzynski P: **Visualization of synchronization of the uterine contraction signals: running cross-correlation and wavelet running cross-correlation methods.** *Med Eng Phys* 2006, **28**:75-81.

Publish with **BioMed Central** and every scientist can read your work free of charge

"BioMed Central will be the most significant development for disseminating the results of biomedical research in our lifetime."

Sir Paul Nurse, Cancer Research UK

Your research papers will be:

- available free of charge to the entire biomedical community
- peer reviewed and published immediately upon acceptance
- cited in PubMed and archived on PubMed Central
- yours — you keep the copyright

Submit your manuscript here:
http://www.biomedcentral.com/info/publishing_adv.asp

